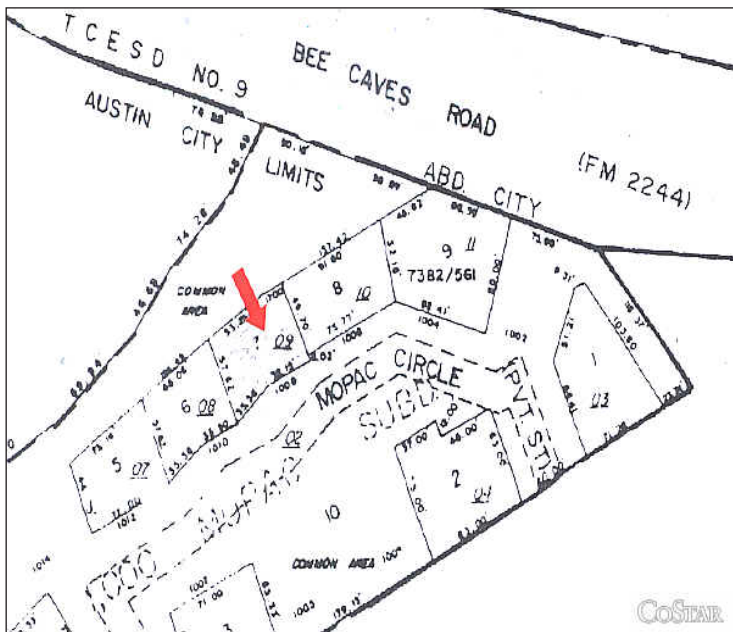


1008 Mopac Circle, Austin, TX 78746



Description: Two-story office condominium located at the southwest corner of Bee Cave Road (RM 2244) and Mopac Expressway



- Size: 4,308± square feet
- Site Size: Approximately 0.09± acre
- Legal: Lot 7 one thousand Mopac Subd Plus 11.46% int in common area
- Year Built: 1980
- Zoning: PUD - City of Austin
- Construction: Frame with stone veneer, tile roof
- Parking: 14 spaces
- Utilities: City of Austin water, wastewater & electric
- 2010 Taxes: \$13,420
- Price: \$715,128/\$166 per sf

For information, contact:

Gail O'Connor
gail@austinsitesolutions.com

1008 Mopac Circle, Austin, TX 78746



Aerial View

Other: The first floor is owner occupied by a dentist. The sale of this building may be combined with the sale of the practice and the dental equipment. Please call broker for additional information.

For information, contact:

Gail O'Connor
gail@austinsitesolutions.com